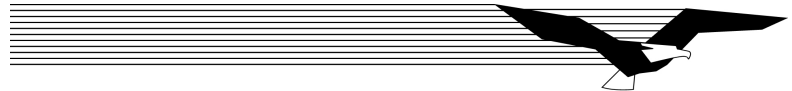


First-Class LETTERS FLATS & PARCELS



POSTAL PRESORT, INC.

820 W 2nd St N
Wichita KS 67203-6005

316-262-3333

Effective: May 12, 2008

			Letters	
Ounces	Full pay	Presort		
1	\$.42	\$.394		
2	\$.59	\$.519		
3	\$.76			
3.5	\$.93			

*

* Letters weighing more than 3.5 ounces are to be mailed at "flats" rates.

A 17-cent nonmachinable surcharge will apply to all First-Class nonmachinable letters.

NOTE:

Meter the following at regular full postage (not presort) rates:

- Letters weighing more than 2 oz
- Letters with handwritten addresses
- Letters with no return address on the front of the envelope
- Letters with no barcode clear zone
- Pieces larger than 6 1/8" x 11 1/2"
 - Pieces larger than 1/4" thick
- Letters smaller than 3 3/4" x 6 3/4"
 - Folded self mailers

Flats		
		Parcels
		Ounces
\$.83	1	\$1.17
\$1.00	2	\$1.34
\$1.17	3	\$1.51
\$1.34	4	\$1.68
\$1.51	5	\$1.85
\$1.68	6	\$2.02
\$1.85	7	\$2.19
\$2.02	8	\$2.36
\$2.19	9	\$2.53
\$2.36	10	\$2.70
\$2.53	11	\$2.87
\$2.70	12	\$3.04
\$2.87	13	\$3.21

	Full pay
Postcards	\$.27

Please copy and distribute freely!